



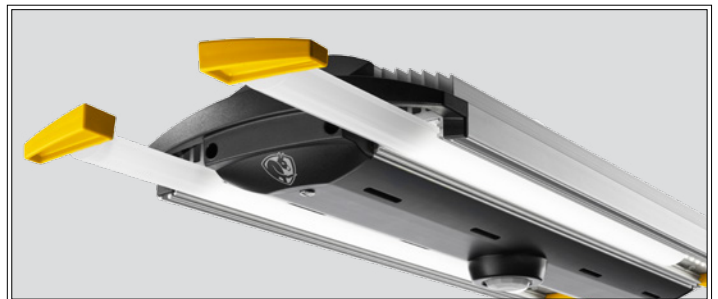
The Garage Light by Big Ass Light

Big Ass Lights bring brilliant, energy-efficient illumination to personal spaces like garages, workshops, boathouses and more. *The Garage Light* transforms lighting in smaller commercial or industrial shops as well. The high-quality LED fixture provides performance, efficiency and brilliance that's unmatched by typical fluorescent and metal halide fixtures.

The Garage Light is housed in a single piece of anodized, extruded aluminum, which provides superior heat dissipation and impact resistance. Complete with a full seven-year warranty, *the Garage Light* is the last light you'll ever need.

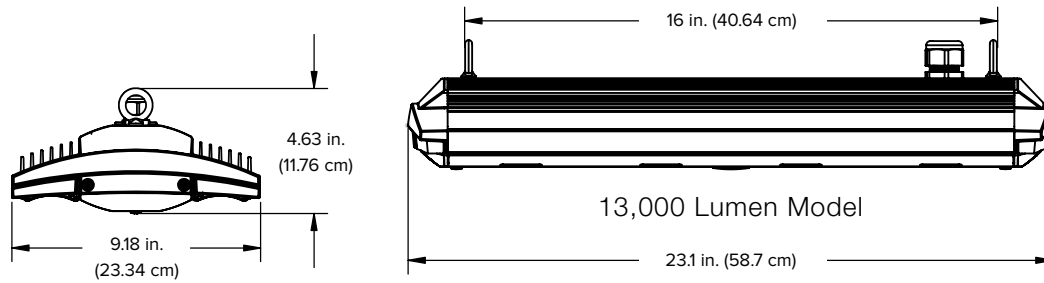
Features and benefits

- Complete seven-year product warranty in the US and Canada
- Patent-pending lumen maintenance tray protects LEDs and allows for easy cleaning of dirt and debris
- Heavy-duty anodized, extruded aluminum construction
- Single piece aluminum housing for improved heat dissipation
- Maintains 70 percent of initial lumen output for up to 150,000 hours
- Optional accessories: integrated adjustable occupancy sensor to maximize energy savings and life



The Garage Light: 13K

TECHNICAL SPECIFICATIONS



Ordering Information

Lighting	Series	Lumen Output	Color Temperature	System Voltage	Lumen Maintenance Tray	Cord Length	Mounting Hardware	Controls
BAL	SHL1	13: 13,000 lm	05: 5000K	01: 120V	Diffuse Only	10: 10 ft (3.05 m) with plug	09: S Hooks	00: No external dimming 01: Occupancy/Photo

Note: Lead times may vary depending on options selected

Light Output

High Bay LED Series	Wattage	Efficacy	Color Temperature	Typical CRI
13,000 Lumen Model	122	114 lumens/watt	5000K	70+

Note: Light output numbers reflect fixture without lumen maintenance tray

Weight	16 lb (7.26 kg)
Power input	120V
Dimming	Not available
Sensors	Optional adjustable, onboard occupancy/photo sensor
Reliability	L70 predicted to exceed 150,000 hours at 25°C (77°F)
Environment	Suitable for dry and damp interior environments
Construction	Extruded anodized aluminum housing (single piece)
Maintenance	Hinged door access to power supply
Ambient operating temperature	-40 to 55°C (-40 to 131°F)
Warranty	7-year complete fixture warranty in the US and Canada; warranty includes power supply*
Certifications	Certified by TUV SUD to UL1598 and CSA C22.2 No.250.0

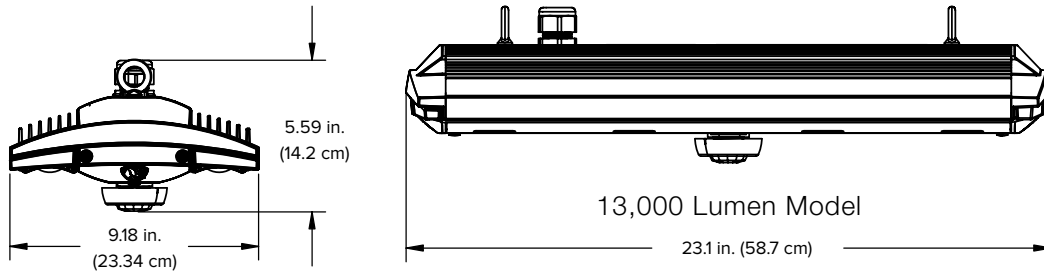
* Warranty available in the US and Canada; certain exclusions apply. Warranties vary by country. See complete warranty for full details.



Accessory:

Occupancy Sensor

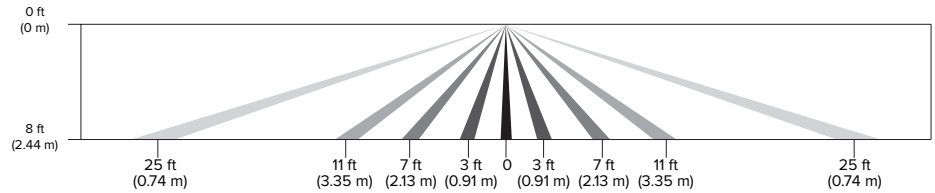
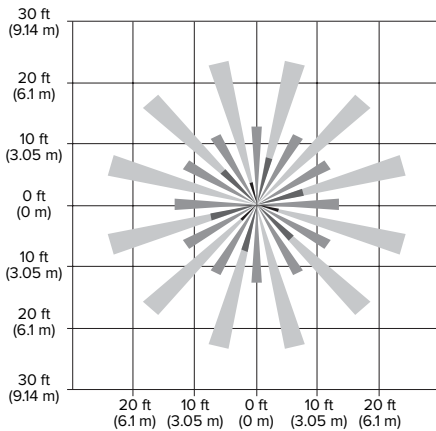
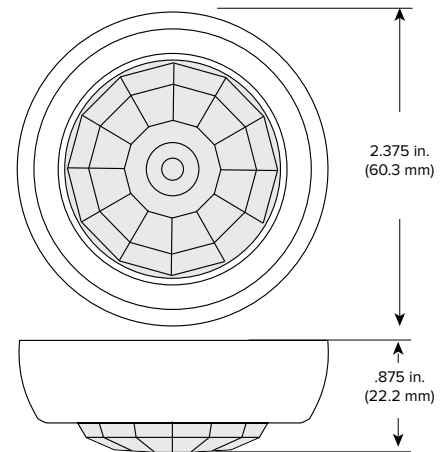
TECHNICAL SPECIFICATIONS



The Garage Light occupancy sensor is a low-profile device that integrates with the LED fixture. The sensor's lens offers 360-degrees of monitoring to automatically turn the light on when people are present and off when a space is vacant. A timed delay for turning the light off once a space is empty can be adjusted from 30 seconds to 30 minutes. The sensor also can be adjusted for varying light-level activation thresholds during daylight hours.

Features and benefits

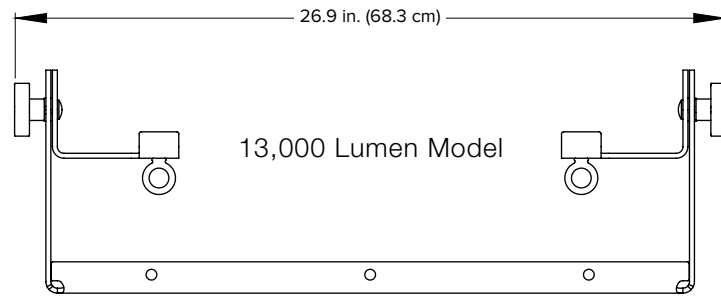
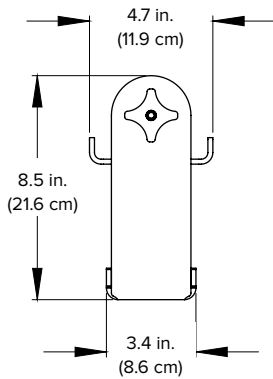
- Low-profile device fully integrated with *the* Garage Light fixture
- Adjustable timed delay for turning fixture off ranging from 30 seconds to 30 minutes
- Lens provides 360-degrees of monitoring coverage
- Lighting level feature allows for adjustable triggering during daylight hours



Accessory:

Wall / Column Mount

TECHNICAL
SPECIFICATIONS



Now you can stick 'em to the walls!

We've always told you to stick our LEDs anywhere the sun don't shine—now we really mean anywhere. Our new wall and column mounts allow you to rotate Big Ass Lights 360° for direct, focused light, right where you need it. Just like our lights, our mounts are

crafted from super-durable aluminum, so they don't mind if you drop a hammer on them or smack them around with a forklift a little. So forget the flashlight and leave your head lamp at home—Big Ass Light now goes anywhere you can.

